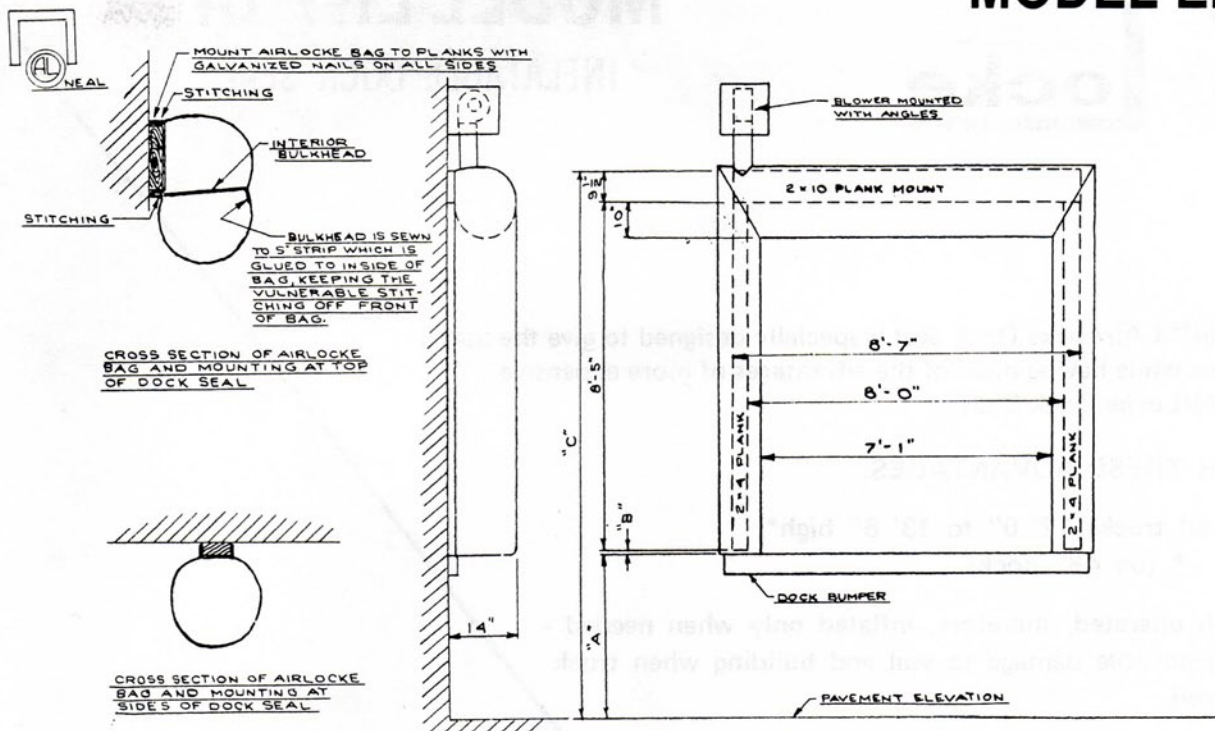
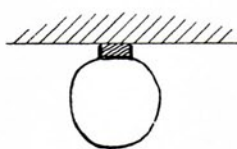


# MODEL EN/14



CROSS SECTION OF AIRLOCKE BAG AND MOUNTING AT TOP OF DOCK SEAL



CROSS SECTION OF AIRLOCKE BAG AND MOUNTING AT SIDES OF DOCK SEAL

MOUNT AS FOLLOWS FOR LISTED DOCK HEIGHTS

| "A" | "B" SIDE 2x4 FROM FLOOR | "C" GROUND TO TOP OF 2x10 | SEALS TRUCKS               |
|-----|-------------------------|---------------------------|----------------------------|
| 46" | 3"                      | 13' - 3 1/2"              | 11' - 11" TO 13' - 5" HIGH |
| 47" | 3"                      | 13' - 4 1/2"              | 12' - 0" TO 13' - 6" HIGH  |
| 48" | 2"                      | 13' - 4 1/2"              | 12' - 0" TO 13' - 6" HIGH  |
| 49" | 1"                      | 13' - 4 1/2"              | 12' - 0" TO 13' - 6" HIGH  |
| 50" | 1"                      | 13' - 5 1/2"              | 12' - 1" TO 13' - 6" HIGH  |

| AIRLOCKE DOCK SEAL  |            |         |
|---|------------|---------|
| DIVISION OF ONEAL TARPULIN & AWNING CO.<br>549 W. INDIANOLA AVE. YOUNGSTOWN, OHIO |            |         |
| DRAWN BY  | D. SHODEEN | No      |
| DATE  | 4-3-72     | 82-AL-1 |

## SPECIFICATIONS - MODEL EN/14

**Material** - 14 oz. per sq. yd. Neoprene coated Nylon. (\*Remains flexible to 40° below 0° Fahrenheit.)

**Blower** - 1/10 H.P., squirrel cage type, 1 ph, 115 V, 60Hz, 1.43A, complete with all attachments for mounting outside of building with protective hood. (Inside mounting available.)

**Sealing Capacity** - Trucks 7'-6" to 8'-0" wide and 12'-0" to 13'-6" high on 46 to 50 inch high docks.\*  
\*(50" high dock seals trucks 12'-1" to 13'-6").

### Mounting Plank Requirements - (Furnish Locally)

- (1) 2 x 10 plank - 8'-7" long
- (2) 2 x 4 planks - 8'-5" long

**Ideal Door Size** - 8'-0" wide x 8 or 9 ft. high - 48" dock.

**Electrical Requirements** - Switched 115 V outlet\* beside door by others. (12 ft. grounded cord and plug furnished will plug into this outlet). If desired, cord can be removed from junction box on blower and building wiring run from switch to blower by electrical contractor.

\*Recommended use of Pilot Light.

**Short Form Specifications** - Furnish and install in locations as indicated AirLocke Dock Seal Model EN/14 loading dock seal as manufactured by O'Neal's Tarpaulin & Awning Co., 549 W. Indianola Avenue, Youngstown, Ohio 44511. Electrical connections by others.

AIRLOCKE DOCK SEAL  
Division of O'Neal Tarpaulin Co.  
549 W. Indianola Ave. - Youngstown, Ohio 44511  
Telephone: (330) 788-6504  
FAX: (330) 788-6705

Distributed By: