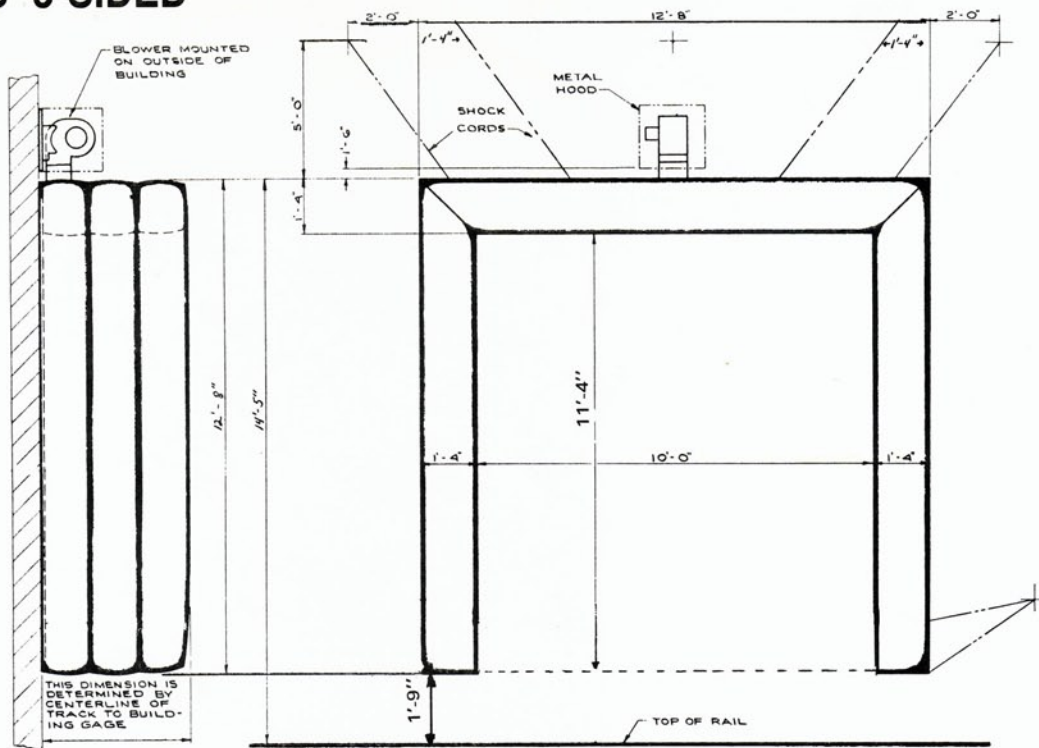
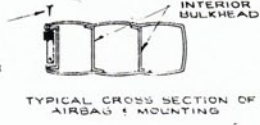


# MODEL RS<sup>2</sup> 3-SIDED



MOUNT AIRBAG TO WOOD FRAME AT TOP EDGE WITH GALVANIZED NAILS OR RUSTPROOF STAPLES



RAILROAD APPLICATION METHOD B BLOWER MOUNTING

AIRLOCKE DOCK SEAL	
DIVISION OF ONEAL TARPULIN AWNING CO. 549 W. INDIANOLA AVE. YOUNGSTOWN, OHIO	
Change by	L.O.N.
DATE	3/14/78
82-AL-30	

## SPECIFICATIONS - MODEL RS<sup>2</sup> 3-SIDED

- Material** - 14 oz. per sq. yd. Neoprene coated Nylon. Remains flexible to 40° below 0° Fahrenheit.
- Construction** - All stitching with dacron thread. All sections on exterior of AirLocke double sewn where joined.
- Blower** - 1/6 H.P. , squirrel cage type, 1 ph, 115 V, 60Hz, 2.59A, complete with all attachments for mounting inside or outside building. (Specify location.)
- Sealing Capacity** - Per dimensions shown on drawings. Projection determined from actual dimensions from rail to building for each installation with proper allowance for varying car widths.
- Mounting Frame** - Top of seal mounts to wood for caulking. Remainder of seal has tubing inserts to clamp in special fittings for installation and removal.
- Ideal Door Size** - Normally covers 10' x 10' door as is, reduces height unless ordered higher. On larger door sizes, the door size must be reduced slightly or the width of the AirLocke increased above standard (when required.)
- Electrical Requirements** - Switched 110 V outlet\* beside door by others. (12 ft. grounded cord and plug furnished will plug into this outlet). If desired, cord can be removed from junction box on blower and building wiring run from switch to blower by electrical contractor. 5.6 AMP  
\*Recommended use of Pilot Light.
- Short Form Specifications** - Furnish and install in locations as indicated AirLocke Dock Seal Model RS<sup>2</sup> 3-Sided loading dock seal as manufactured by O'Neal's Tarpaulin & Awning Co., 549 W. Indianola Avenue, Youngstown, Ohio 44511. Electrical connections by others.

**AIRLOCKE DOCK SEAL**  
 Division of O'Neal Tarpaulin Co.  
 549 W. Indianola Ave. - Youngstown, Ohio 44511  
 Telephone: (330) 788-6504  
 FAX: (330) 788-6705

Distributed By: