

AIRLOCKE DOCK SEAL

Model RS²-3 sided Inflatable Rail Seal

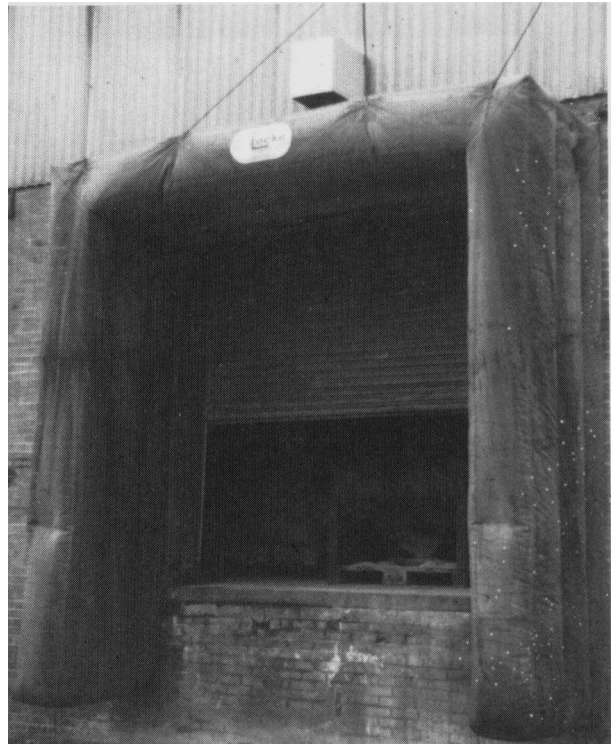
Consider these Advantages

- *Designed for Dock openings up to 10'-0" x 10'-0"*
- *Can be modified or specially designed to meet specific needs.*
- *Inflates to form a weather-tight insulating (appx. 130 cubic feet of air) seal between dock opening and rail car—keeps inclement weather out; heated and conditioned air in.*
- *Blower can be mounted outside building or inside for greater protection.*
- *Switch operated, Inflates only when needed, Deflates when not in use and held against building by flexible cords; no protrusions or obstructions along rail siding*
- *Fabricated from heavy duty 14oz. vinyl coated nylon and sewn with Dacron thread.*

AIRLOCKE DOCK SEAL

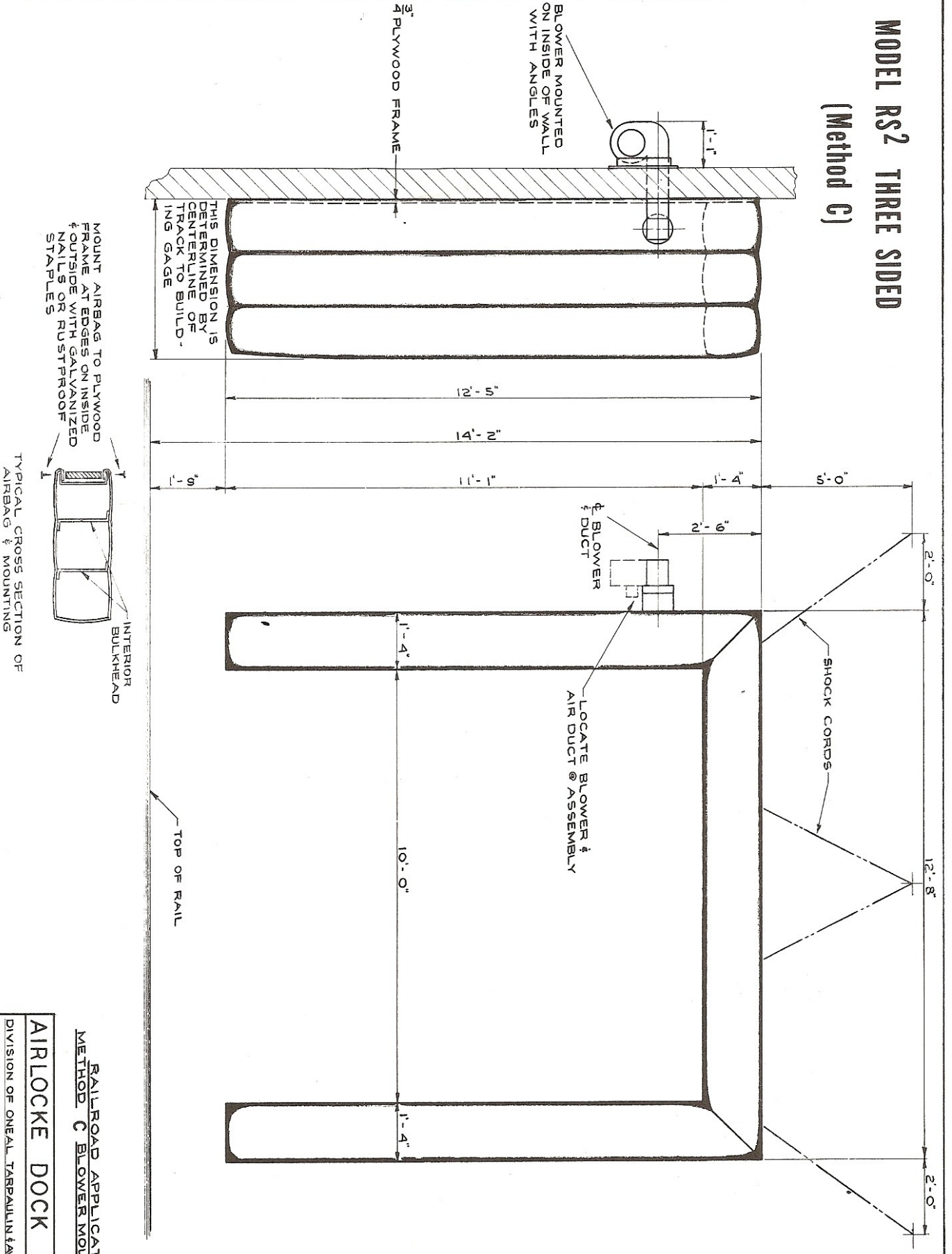
**549 W. Indianola Ave.
Youngstown, Ohio 44511**

Phone: 330-788-6504
Toll Free: 1-800-538-2388
Fax: 330-788-6705
E-mail: airlocke99@aol.com



Model RS2 Dock Seal features formed square corners, an insulated passageway to and from the rail car and a tight seal. Specifically designed stretch cords support Model RS2 on outer wall when deflated. Design creates trough on upper seal to disperse water on both sides. Standard size provides access to full width of 10'-0" and height of 11'-4". Outward projection determined by wall to center of track distance. Inflated by a switch operated 1/6 hp wall mounted blower.

MODEL RS2 THREE SIDED (Method C)



RAILROAD APPLICATION
METHOD C BLOWER MOUNTING
AIRLOCK DOCK SEAL

DIVISION OF ONEAL TARPALLIN & AWNING CO.
549 W. INDIANOLA AVE., YOUNGSTOWN, OHIO

DRAWN BY DAVID A. SHODDEN
DATE 5-4-72

AL-72-56