

AIRLOCKE DOCK SEAL

Model RS² Inflatable Rail Seal

Consider these Advantages

- *Designed for Dock openings up to 10'-0" x 10'-0"*
- *Can be modified or specially designed to meet specific needs.*
- *Inflates to form a weather-tight insulating (appx. 170 cubic feet of air) seal between dock opening and rail car—keeps inclement weather out; heated and conditioned air in.*
- *Blower can be mounted outside building or inside for greater protection.*
- *Switch operated, Inflates only when needed, Deflates when not in use and held against building by flexible cords; no protrusions or obstructions along rail siding*
- *Fabricated from heavy duty 14oz. vinyl coated nylon and sewn with Dacron thread.*

AIRLOCKE DOCK SEAL

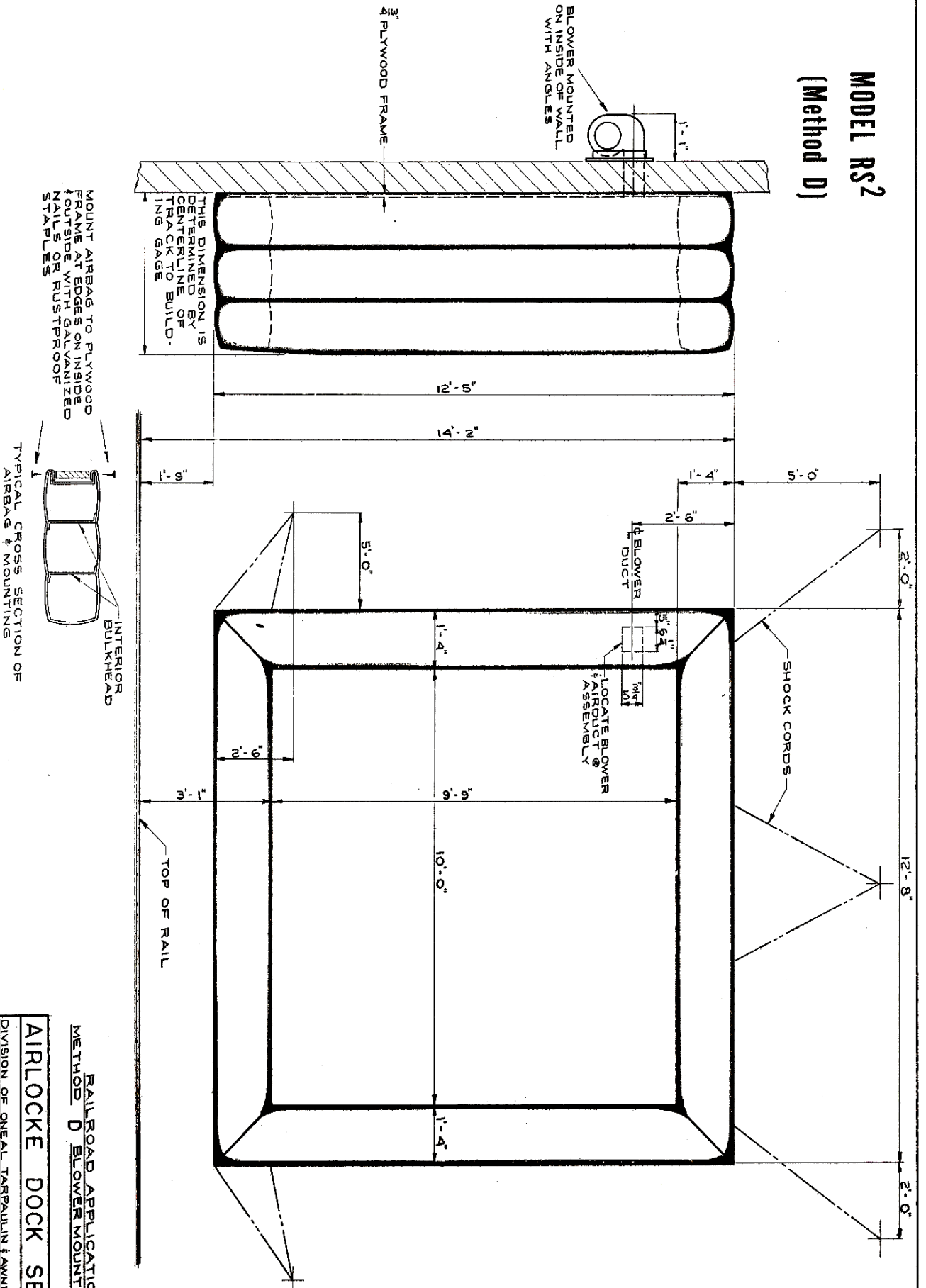
**549 W. Indianola Ave.
Youngstown, Ohio 44511**

Phone: 330-788-6504
Toll Free: 1-800-538-2388
Fax: 330-788-6705
E-mail: airlocke99@aol.com



Model RS2 Dock Seal features formed square corners, an insulated passageway to and from the rail car and a tight seal. Specifically designed stretch cords support Model RS2 on outer wall when deflated. Design creates trough on upper seal to disperse water on both sides. Standard size provides access to full width of 10'-0" and height of 9'-6". Outward projection determined by wall to center of track distance. Inflated by a switch operated 1/6 hp wall mounted blower.

MODEL RS2 (Method D)

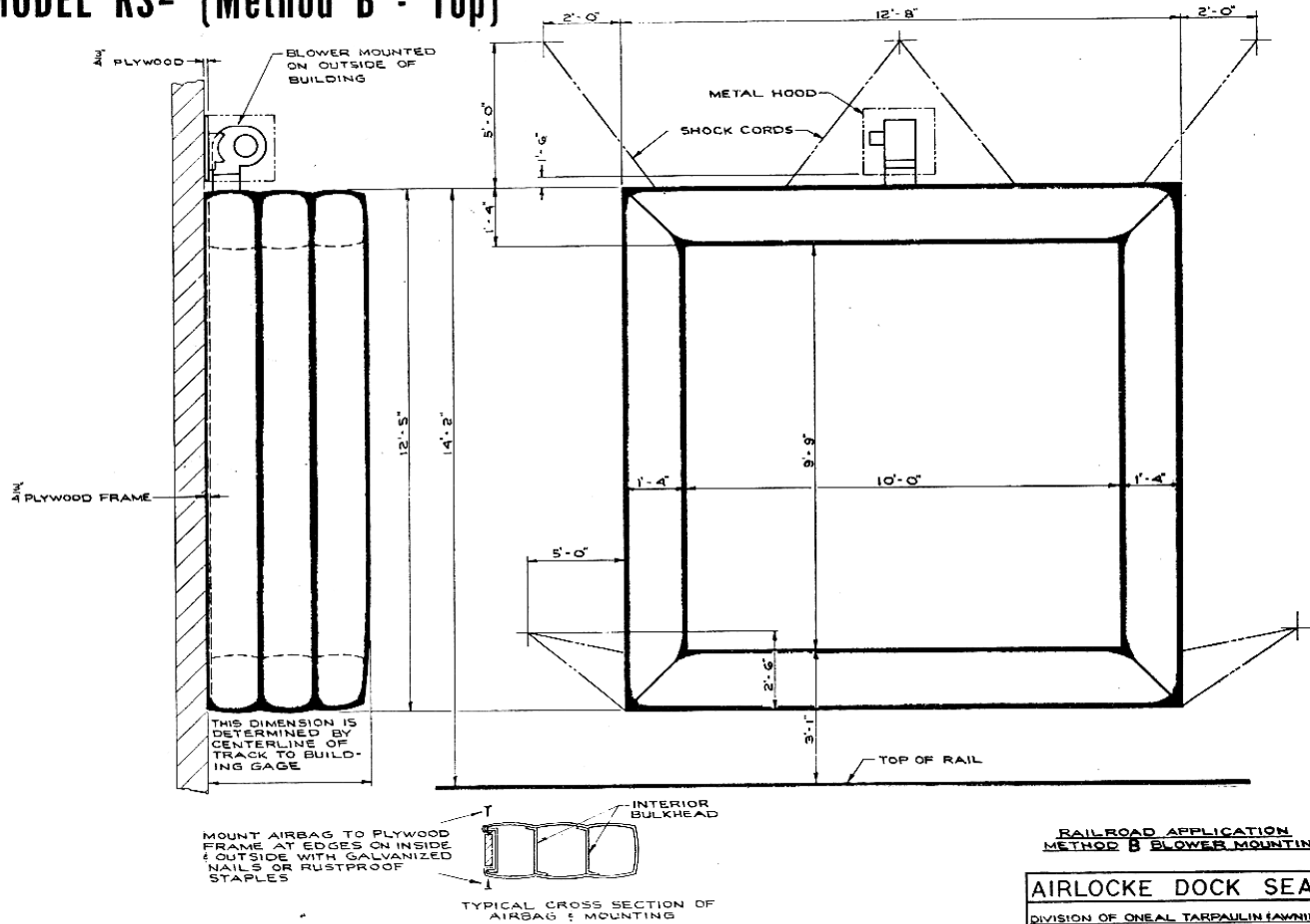


RAILROAD APPLICATION
METHOD D BLOWER MOUNTING

AIRLOCKE DOCK SEAL

DIVISION OF ONEAL, TARBULLIN FARMING CO.	
549 W. INDIANOLA AVE., YOUNGSTOWN, OHIO	
DRAWN BY	DAVID A. SHODDEN
DATE	5-5-72
AL-72-58	

MODEL RS² (Method B - Top)



RAILROAD APPLICATION
METHOD B BLOWER MOUNTING

AIRLOCKE DOCK SEAL	
DIVISION OF ONEAL TARPULIN TANNING CO. 549 WINDIOLA AVE. YOUNGSTOWN, OHIO	
DRAWN BY	AL-72-52
DATE	5-10-72

SPECIFICATIONS – MODEL RS²

- Material** - 14 oz. per sq. yd. Vinyl Coated Nylon . Remains flexible to 40^o below 0^o Fahrenheit .
- Construction** - All stitching with dacron thread. All sections on exterior of AirLocke double sewn where joined.
- Blower** - 1/6 H.P. shaded pole, squirrel cage type, 1 phase, 110V, 60 cycle, complete with all attachments for mounting inside or outside building.
- Sealing Capacity** - Per dimensions shown on drawings. Projection determined from actual dimensions from rail to building for each installation with proper allowance for varying car widths. AirLocke can be manufactured for center line of tracks to building measurement up to 10' 6".
- Mounting Frame** - 3/4 inch exterior plywood frame to fit dimensions of seal is furnished with each rail unit. Plywood sections are marked and unpainted. Rail AirLocke completely covers face and edges of plywood.
- Ideal Door Size** - Normally covers 10' x 10' door as is, reduces height unless ordered higher. On larger door sizes, the door size must be reduced slightly or the width of the AirLocke increased above standard (when required).
- Electrical Requirements** - Switched 110V outlet* beside door by others. (12 ft. grounded cord and plug furnished will plug into this outlet.) If desired, cord can be removed from junction box on blower and building wiring run from switch to blower by electrical contractor. 5.6 AMP *Recommend use of Pilot Light.
- Short Form Specifications** - Furnish and install in locations as indicated AirLocke Dock Seal Model RS² loading dock seal as manufactured by O'Neal Tarpaulin Co., 549 W. Indianola Avenue, Youngstown, Ohio 44511. Mounting planks and electrical connections by others.

airLocke Dock Seal

Phone: 330-788-6504
 Toll Free: 1-800-538-2388
 Fax: 330/788-6705
 E-mail: airlocke99@aol.com
 www.airlocke.com

Distributed By: